



KIA ORA KOUTOU 10 February 2026 # 01

Kia Ora Koutou Katoa Rātū 10 Hui-tanguru ~ Tuesday 10 February 2026

Welcome back for the 2026 school year. We are happy to see the children back at school and ready to engage in their learning. Welcome to the new children who have joined our school and our community. We look forward to getting to know you.

Meet and Greet BBQ:

We will hold our annual meet and greet BBQ this Thursday from 5.00pm to 6.30pm. Bring along a picnic dinner, meet new families, and pop into your child's classroom. We will have the BBQ out with a sausage sizzle as well. (No charge for these).

Swimming:

Our pool is ready for swimming season. **Please name togs and towels** as they often end up in the lost property. Your child's teacher will be able to tell you which days your child has swimming. Thank you to our caretaker, and Mr Naera, for ensuring the pool was ready for us this term.

Ohope Beach School Donations:

Unfortunately, we do not qualify for the government donation funding or free lunches which other schools in the area receive which is why we ask for donations to support the programmes we offer.

The donation is used for live shows, Life Education, transport to and from some events, Science Expo and sports uniforms. We appreciate your donation which can be paid on a term-by-term basis or as a lump sum.

You can also set up an automatic payment to pay off the amount over the year.

Number of children attending Ohope Beach School	Payment per term	TOTAL payment for the year
1 child	\$37.50	\$150.00
2 children	\$70.00	\$280.00
3 children	\$97.50	\$390.00

You can pay your donation using internet banking – please use “School Donation” as the reference and include your child's name.

Our bank account details are as follows:

ASB – Whakatane
123253 0057930 00
A/c Name: Ohope Beach School

School App:

Currently there are a number of communication tools available. We have set up a school app which you will be able to download and gives you access to school information on your mobile phone. You can download the app by searching for SchoolAppsNZ.

Once you have downloaded this app you will be prompted to search for the school. You will be able to notify the school of student absences via the app either by phone or email. The school newsletter will also be sent out each fortnight on the app.



School Website:

We have been working on a new website, and it has finally gone live this week. The newsletter will be uploaded to the website each fortnight along with information about the school.

UPCOMING EVENTS TERM 1

Week 1:

Thursday 12th February:
Meet and Greet BBQ 5.00pm to 6.30pm

Friday 13th February:

Assembly: Ngā Huiarau
Meremere - Whaea Sandy

Buddy Groups meet

Week 2:

Wednesday 18th February:
Setting the Scene Interviews

Thursday 19th February:
Setting the Scene Interviews

Friday 20th February:

Assembly: Kahikatea Mrs England

House Groups meet

Week 3:

Monday 23rd February:
BoT Meeting – 5.30pm

Friday 27th February:

Assembly: Ngā Peka Rimu – Whaea Cherie

Week 4:

Tuesday 3rd March:
Education Review Team at school.

Wednesday 4th March:
Education Review Team at school.

Friday 6th March:

Interschool Swimming Sports
Year 4, 5 & 6 students.

Assembly: Kowhai Whaea
Merrissa

House Groups meet

Week 5:

Friday 13th March:
Assembly: Nga Huiarau
Matariki - Whaea Holly

Week 6:

Monday 16th March:
Ngā Huiarau camp at Totara Springs.

Tuesday 17th March:

Ngā Huiarau camp at Totara Springs.

Wednesday 18th March:
Ngā Huiarau camp at Totara Springs.

School Crossing:

Just a reminder to be vigilant when using the crossing or driving through the crossing now we are back at school. Our road patrol students are at the crossing from 8.00am to 8.30am and from 2.25pm to 2.45pm. Thank you to the parents who are supporting the senior students with road patrol each morning.

Lost Property:

Our lost property box is located on the deck below our Ngā Huiarau classes. Any items that are left in the playgrounds will be put into the box. Be sure to check this regularly, if your child has lost any items. During swimming season items that are left behind are pegged to the fence, if they remain unclaimed, they will go into the lost property box.

Are there any volunteers who would be able to wash the end of 2025 lost property so we can donate it. We have a number of bags of clothing and a full bag of shoes. Please let me know if you are able to help.

Sun Hats:

Term four is a sun hat term. Please make sure your child has a named bucket sun hat that they can wear when they are out in the playground at school.

Setting the Scene:

These interviews will be held on Wednesday 18th and Thursday 19th February from 3.00pm to 6.00pm. You will be able to book your time on the school website. These interviews are a chance to meet with your child's teacher and discuss the programme for the year and anything you wish to share about your child's learning. Whaea Julie will send out a message when the site is ready for bookings.

New Caretaker:

Chris Staniland has started with us this week as our new caretaker. He is learning all the various aspects that make up the role of caretaker in our school.

Whakatāne Wheels Day:

Thursday 19th February is the day to ride your choice of wheels to school. It could be a scooter, roller skates, skateboard or a bike. The Eastern Bay of Plenty Road Safety team will be at the school from 10.30am to give out treats and some prize packs. The day is about celebrating being fit and active and how this can lead to positive health benefits.



Our 2026 teaching teams.

Te Tiwai Team: Year 1 & 2

Our Te Tiwai team consists of the staff and children in Manuka and Kowhai. Merrissa Shipton is the team leader of Te Tiwai.

Manuka:

Emma Gibson (Whaea Emma) and Meg Broadhurst (Whaea Meg) are the teachers of our year 1 children in Manuka. These are the children who have just started school this year. Whaea Meg is responsible for the before school visits and liaising with new children and their families. Whaea Emma will work each Monday and Tuesday and Whaea Meg will work Wednesday, Thursday and Friday each week. Manuka is located on the ground floor closest to the entrance to the school.

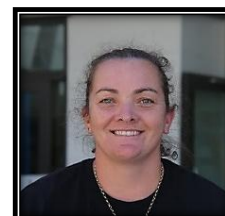


Whaea Emma

Kowhai:

Merrissa Shipton (Whaea Merrissa), is the teacher of our Kowhai learning space which is located downstairs. Our year 1 children are in this learning space. Students will transition from Manuka to Kowhai during the year. Both classes will work together throughout the year.

These students will work from Phase 1 of the new curriculum.



Whaea Merrissa



Whaea Meg

Ngā Peka Team: Year 2 & 3

Our two learning spaces which make up the Ngā Peka team are Rimu and Totara. Our year 2 & 3 children are in these learning spaces upstairs. Whaea Cherie is the team leader of Ngā Peka. These students will work from Phase 1 of the new curriculum.

Whaea Cherie



Rimu:

Cherie Walker (Whaea Cherie) and Laura McCarthy (Whaea Laura) will work in Rimu space which is located upstairs above the office.

Angela Gouk (Whaea Angela) will be in Rimu each Wednesday. Whaea Rowena will also work in this learning space on set days.

Whaea Laura



Totara:

Zoe Webb (Miss Webb) and Dana White (Whaea Dana) will work in the Totara space which is located upstairs above the office. Whaea Angela will also be in these spaces each week.

Miss Webb



Whaea Dana



Ngā Huiarau Team: Year 4, 5 & 6

The Ngā Huiarau team consists of four kaitiaki classes. These students will work from Phase 2 of the new curriculum.

Sandy Jones (Whaea Sandy) is the team leader and the Deputy Principal of the school.

Kahikatea:

Karen England (Mrs England) is the teacher in Kahikatea this year, our Year 4 students are in this learning space. It is located upstairs above the Kowhai learning space.

Mrs England



Awatea:

Roz Dakin (Whaea Roz) is the teacher of the Year 5 & 6 students in our Awatea learning space. This space is located upstairs at the back of the school, it is the first learning space of this block.

Whaea Roz



Matariki:

Holly Simonsen (Whaea Holly) is the teacher of the Year 5 & 6 students in our Matariki learning space. This space is located upstairs at the back of the school. It is the middle learning space.

Whaea Holly



Meremere:

Sandy Jones (Whaea Sandy) is the teacher of the Year 5 & 6 students in our Meremere learning space. This space is located upstairs at the back of the school. It is the last learning space of this block.

Whaea Sandy



Learning Support:

Angela Gouk is the school Learning Support Co-ordinator. Her office is located opposite the school office. Whaea Angela will also work in the Rimu and Totara spaces each week.

Jenny Jones (Whaea Jenny) will provide Literacy Support to groups and individuals during the year. Jenny is based in the breakout space off Kahikatea.

Whaea Jenny



Whaea Angela



Office Staff:

Jenny McKenzie and Julie Staniland are our Office Managers. The office is open from 8.00am to 3.00pm each day. These are the staff members who will phone you if your child is absent (and we have not received any information) or if your child is unwell during the day. Julie is also the school librarian and looks after our IT equipment.



Release Teachers:

Whaea Rowena & Whaea Lynda.

We have two teachers who will provide release to our team leaders and teachers. Whaea Lynda will work in our Year 5 & 6 classes each Tuesday and Wednesday. Whaea Rowena will work in Kahikatea (Whaea Karen) Rimu (Whaea Cherie) and Kowhai (Whaea Merrissa) to provide release.

Pitopito Korero:

Our senior children are keen and enthusiastic when it is their turn to present our morning Pitopito Korero. The children take time each morning to review their scripts and practice their pronunciation. We look forward to supporting our students as they take up this opportunity each morning.

Thank you to the two students who have taken on this role for the first week of the term.

This week the whakataukī we are sharing is:

"He waka eke noa"

This whakataukī means: A canoe we are all in together. Helps us to know the importance of being a part of a group or team and everyone working together.



Week 1

Positivity **R**espect **I**ntegrity **D**iligence **E**mpathy

Term Dates: 2026

- Term 1:** Monday 9th Feb. to Thursday 2nd April
- Term 2:** Monday 20th April to Friday 3rd July
- Term 3:** Monday 20th July to Friday 25th Sept.
- Term 4:** Monday 12th Oct. to Friday 18th Dec.

Teacher Development Days 2026:

- TERM 2:** Monday 20th April
- TERM 3:** TBC

2026 Statutory Holidays in term time:

- TERM ONE:**
Friday 3rd April – Good Friday
- TERM TWO:**
Monday 27th April – ANZAC Day
Monday 1st June – King's Birthday
- TERM FOUR:**
Monday 26th October – Labour Day

HOUSE GROUP SPONSORS



**Ōhope Medical Centre
Tohorā**



**Four Square
Paea**



**Holland Beckett
Aihe**

**Ray White Real Estate
Mangōpare**



Thank you to our House Groups Sponsors who enable us to have house shirts for the students.